

Type: CE = Single Inlet

Performance / Dimensions

FISCHBACH
COMPACT
FAN

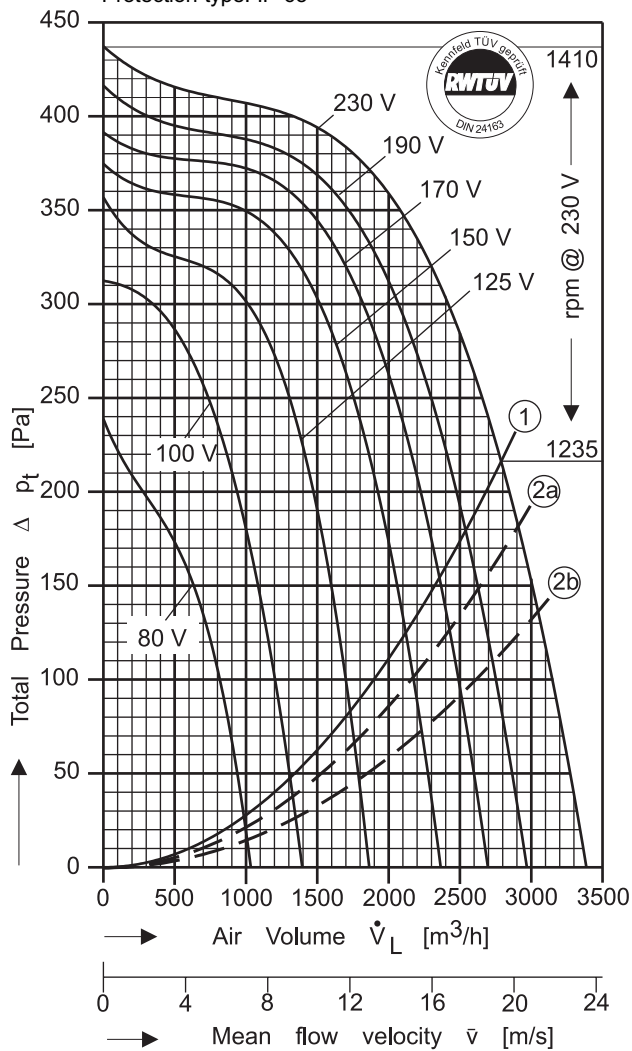
Type: CE 690/E 35 [230V 1N~ 50 Hz]

MP Capacitor 25 μ F - 400 VDB

Protection type: IP 65

Please state intake side !

For sound data please see extra pages.



$P_{max} = 0,85 \text{ kW}$ $I_A / I_N = 1,9$ $I_{max} = 4,00 \text{ A}$

① System curve for dynamical pressure part related to fan discharge surface of 0,04 m^2 . Max. permissible air temperature: 70°C.

②a System curve incl. pressure regain by means of TRANSITION PIECE (square to round) with connected duct. Duct length: 0,6 m.

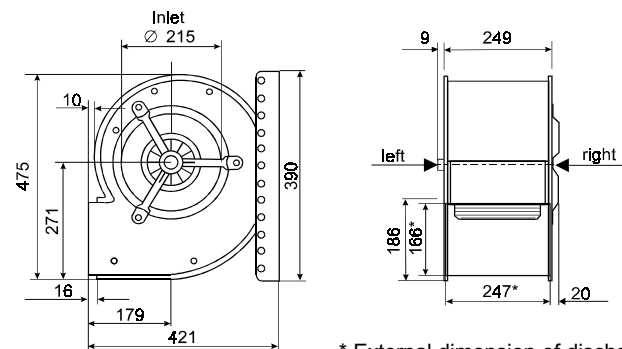
②b System curve incl. pressure regain by means of DIFFUSER ANGLE FRAME with connected duct. Duct length: 3,3 m

Voltage [V]	Air Volume \dot{V}_L [m^3/h] at $\rho = 1,2 \text{ kg/m}^3$ and current [A] (bold figures, 2nd. line)							
	Free Air	Total Pressure Δp_t [Pa]						
		50	100	150	200	250	300	400
80	965 2,27	940 2,25	820 2,13	630 1,95				
100	1305 2,81		1200 2,66	1080 2,49	940 2,28	740 2,00		
125	1725 3,30		1700 3,25	1590 3,05	1470 2,84	1300 2,57	1000 2,17	
150	2110 3,56			2060 3,47	1930 3,27	1760 3,02	1520 2,69	
170	2350 3,66				2230 3,49	2050 3,24	1820 2,94	
190	2535 3,72				2480 3,65	2300 3,43	2070 3,15	
230	2795 4,00					2660 3,85	2420 3,63	1330 2,79

Save power and even more silent with
FISCHBACH SPEED CONTROLLERS
FISCHBACH AUTOMATIC CONTROLLERS

Voltage Control	Type*	Order-No.*
Stepless, 0 - 100% and 100% - 0	FDR 55	6163
Stepwise, 7 Steps	FDR 420	6201
FISCHBACH AUTOMATIC CONTROL **	FRA 55	6252

* For further details see resp. catalogue pages
** For details of sensors etc., on request



100%
controllable



The Silent One

In the above diagram the **TOTAL** pressure (the sum of the dynamic and static pressures) is shown in relation to the air volume, dynamic pressure is shown below system line No.1. Static pressure is shown above that line.

To regain static pressure and reduce dynamic pressure connect a suitable transition piece on the fan outlet.