

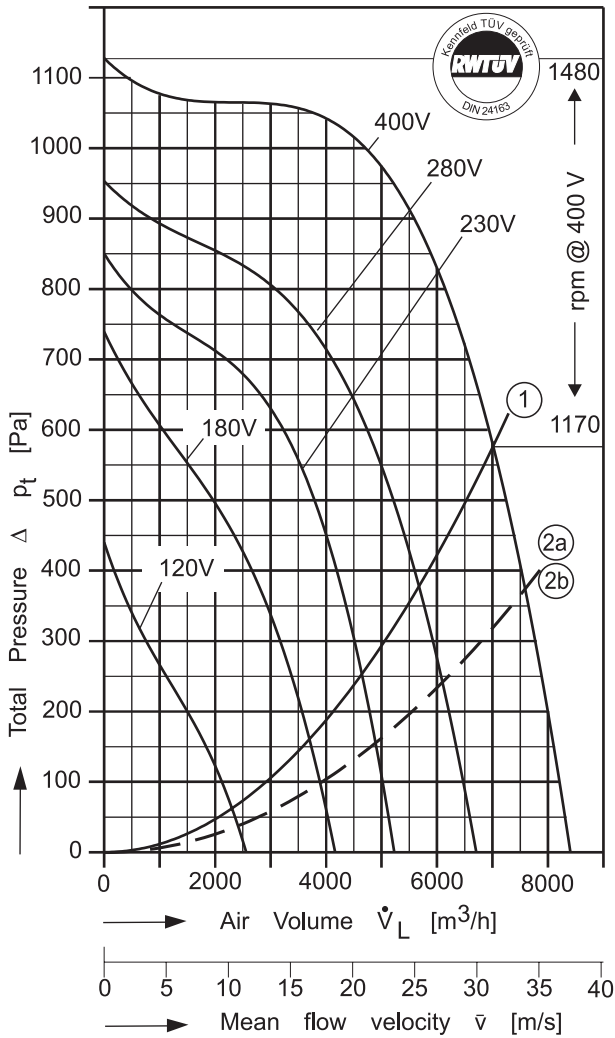
Type: CE = Single Inlet

Performance / Dimensions



Type: CE 9-090/D 2.5 [400V 3N~ 50 Hz]
Protection type: IP 65

Please state intake side !
For sound data please see extra pages.

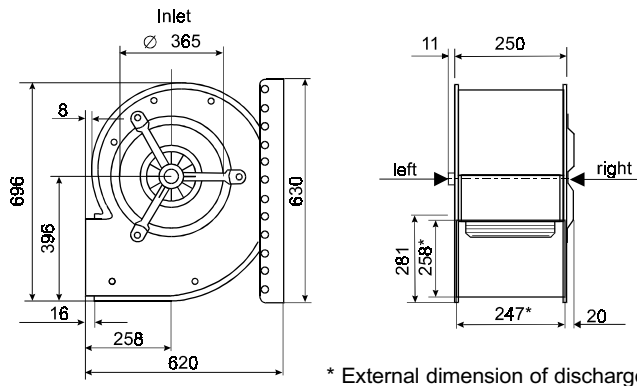


Voltage [V]	Air Volume \dot{V}_L [m³/h] at $\rho = 1,2 \text{ kg/m}^3$ and current [A] (bold figures, 2nd. line)							
	Free Air	Total Pressure Δp_t [Pa]						
		100	250	400	550	700	850	1000
120	2315 5,14	2120 5,00	1120 4,37					
180	3705 6,66		3380 6,36	2670 5,68	1530 4,61			
230	4635 7,62			4200 7,12	3540 6,37	2190 5,00		
280	5690 8,31			5600 8,23	4990 7,64	4110 6,76	2120 4,91	
400	6990 9,68					6580 9,28	5890 8,65	4715 7,75

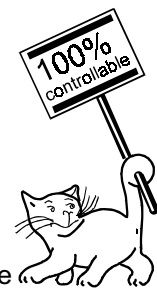
Save power and even more silent with FISCHBACH SPEED CONTROLLERS FISCHBACH AUTOMATIC CONTROLLERS

Voltage Control	Type*	Order-No.*
Stepless, 0 - 100% and 100% - 0	FDR 120/3	6233
Stepwise, 5 Steps	FDR 11.3/3	6175
FISCHBACH AUTOMATIC CONTROL**	FRA 120/3	6283
Frequency Inverter FFU	on request	

* For further details see resp. catalogue pages
** For details of sensors etc., on request



- ① System curve free air related to standard fan discharge surface of 0,0622 m². Max. permissible air temperature: 640° C
- ②a System curve incl. pressure regain by means of TRANSITION PIECE (square to round, FISCHBACH accessory) with connected duct. Duct length: 1,8 m.
- ②b System curve incl. pressure regain by means of DIFFUSER ANGLE FRAME (FISCHBACH accessory) with connected duct. Duct length: 2,3 m.



The Silent One

In the above diagram the **TOTAL** pressure (the sum of the dynamic and static pressures) is shown in relation to the air volume, dynamic pressure is shown below system line No.1. Static pressure is shown above that line.

To regain static pressure and reduce dynamic pressure connect a suitable transition piece on the fan outlet.