

Type: CFE = Single Inlet "Superflat"

Performance / Dimensions

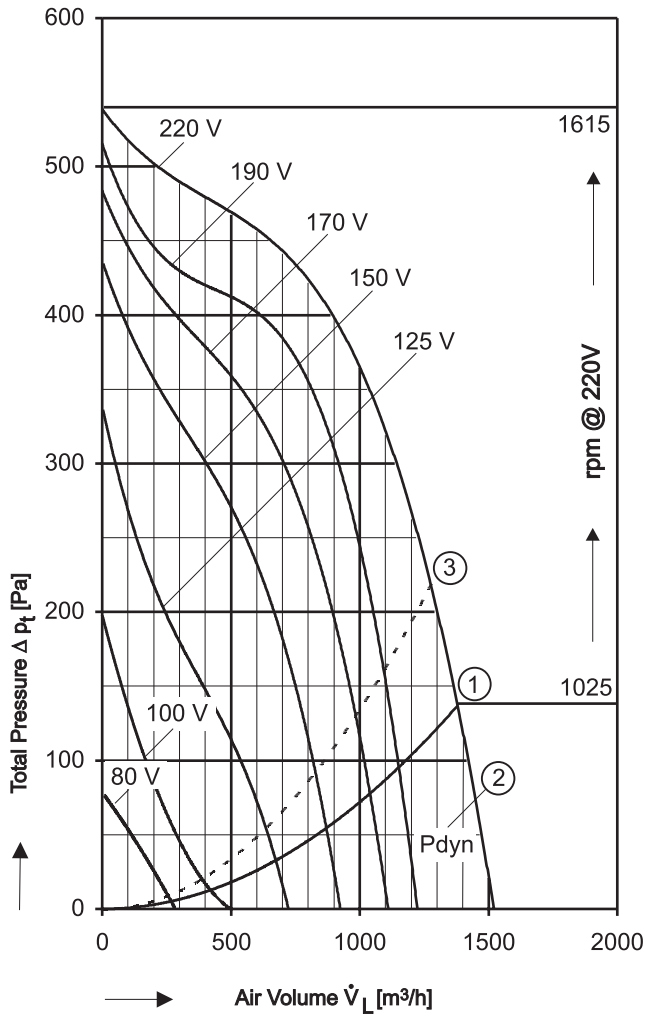


Type: CFE 640/E 15 [220V 1N~ 60 Hz]

MP Capacitor 12 µF - 400 VDB
Protection type: IP 65

Please state intake side !

For sound data please see extra pages.



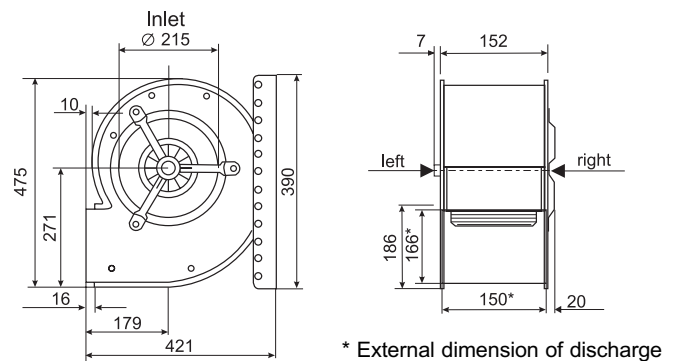
- ① Free air relating to fan discharge area 0,0244 m². Max. permissible ambient temperature 50°C.
- ② Velocity (dynamic) pressure
For Static Pressure Regain see example
- ③ Max. permissible ambient temperature 60°C.

Voltage [V]	Air Volume \dot{V}_L [m³/h] at $\rho = 1,2 \text{ kg/m}^3$ and current [A] (bold figures)							
	Free Air	Total Pressure Δp_t [Pa]						
		100	150	200	250	300	350	400
80	265 0,80							
100	340 1,02	170 0,99						
125	670 1,31	540 1,27	395 1,22	245 1,17				
150	870 1,58	820 1,54	750 1,51	670 1,46	560 1,40	410 1,32		
170	1040 1,76	1020 1,75	960 1,71	895 1,66	815 1,61	705 1,54	545 1,44	
190	1150 1,95	1145 1,94	1100 1,90	1050 1,85	990 1,80	915 1,73	810 1,65	625 1,51
220	1380 2,19		1365 2,17	1300 2,11	1225 2,03	1140 1,95	1035 1,86	890 1,74

**Save power and even more silent
FISCHBACH SPEED CONTROLLERS
Manual and Automatic**

Voltage Control	Type*	Order-No.*
Stepless 0 - 100% and 100% - 0	FDR 32	6162
Stepwise 7 Steps	FDR 420	6201
FISCHBACH AUTOMATIC CONTROL **	FRA 32	6251

* For further details see resp. catalogue pages
** For details of sensors etc., on request



* External dimension of discharge



The Silent One