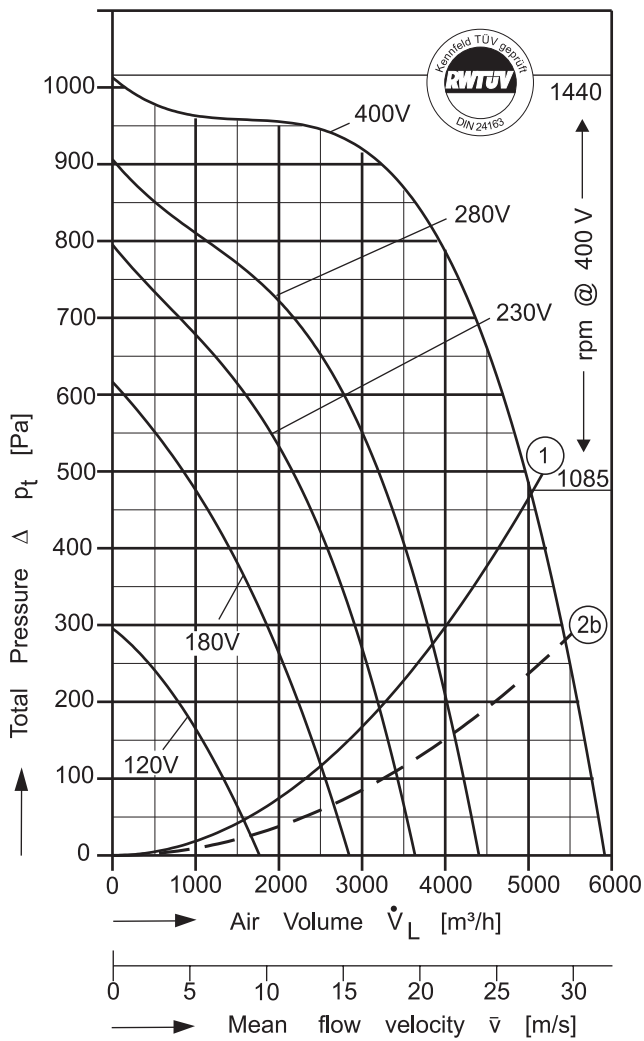


Type: CFE = Single Inlet "Superflat" Performance / Dimensions

FISCHBACH
COMPACT
FAN

Type: CFE 9-070/D 2 [400V 3N~ 50 Hz]
Protection type: IP 65

Please state intake side !
For sound data please see extra pages.

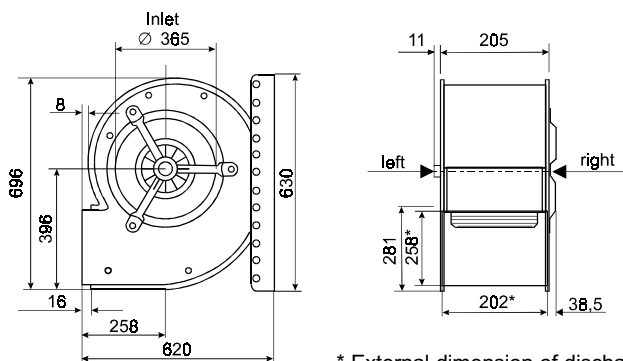


$P_{max} = 3,26 \text{ kW}$ $I_A / I_N = 2,2$ $I_{max} = 6,60 \text{ A}$

Voltage [V]	Air Volume \dot{V}_L [m³/h] at $\rho = 1,2 \text{ kg/m}^3$ and current [A] (bold figures, 2nd. line)							
	Free Air	Total Pressure Δp_t [Pa]						
		100	250	400	550	700	850	950
120	1590 3,07	1330 3,00	440 2,61					
180	2500 4,33		2050 4,02	1410 3,50	520 2,91			
230	3205 5,12		3060 4,98	2580 4,51	1910 3,86	810 3,02		
280	3860 5,77			3520 5,33	3010 4,78	2180 4,04	520 2,56	
400	5050 6,60				4830 6,35	4360 5,85	3645 5,13	2350 4,07

Save power and even more silent with FISCHBACH SPEED CONTROLLERS FISCHBACH AUTOMATIC CONTROLLERS		
Voltage Control	Type*	Order-No.*
Stepless, 0 - 100% and 100% - 0	FDR 80/3	6232
Stepwise, 5 Steps	FDR 8.0/3	6183
FISCHBACH AUTOMATIC CONTROL **	FRA 80/3	6282
Frequency Inverter FFU	on request	

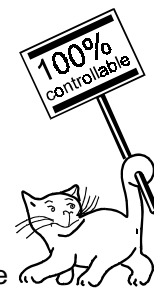
* For further details see resp. catalogue pages
** For details of sensors etc., on request



① System curve free air related to standard fan discharge surface of 0,0051 m².
Max. permissible air temperature: 60 °C

②b System curve incl. pressure regain by means of DIFFUSER ANGLE FRAME (FISCHBACH accessory) with connected duct. Duct length: 2,0 m.

* External dimension of discharge



The Silent One

In the above diagram the **TOTAL** pressure (the sum of the dynamic and static pressures) is shown in relation to the air volume, dynamic pressure is shown below system line No.1. Static pressure is shown above that line.

To regain static pressure and reduce dynamic pressure connect a suitable transition piece on the fan outlet.