

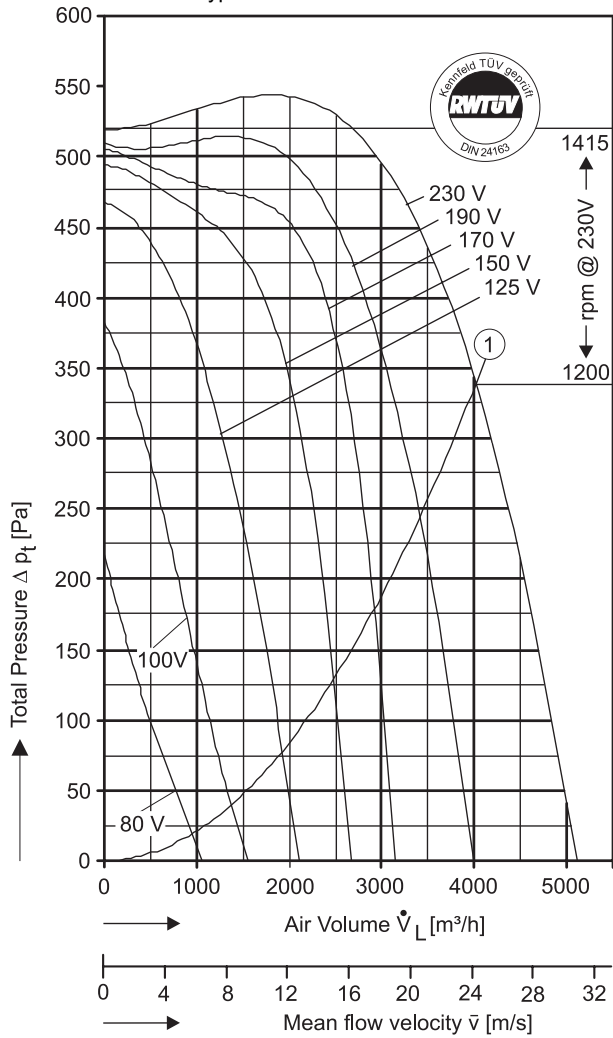
Type: DS = Double Inlet

Performance / Dimensions



Type: DS 6-740/E 65 [230V 1N~ 50 Hz]  
 MP Capacitor 37,5 µF - 400 VDB  
 Protection type: IP 65

For sound data please see extra pages.



$P_{max} = 1,445 \text{ kW}$     $I_A / I_N = 1,7$     $I_{max} = 6,22A$

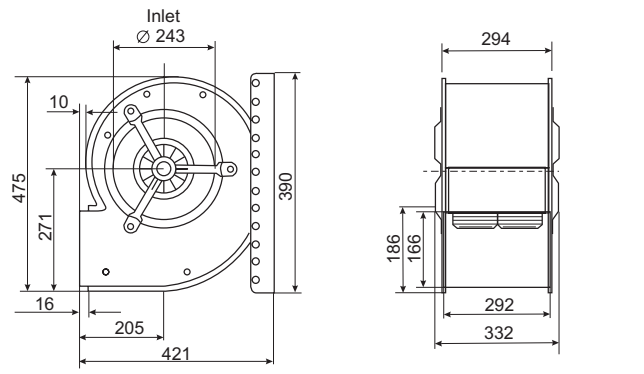
① System curve for dynamical pressure part related to fan discharge surface of 0,0464 m<sup>2</sup>. For operating points above that curve a max. air temperature of 60°C is allowed (Curve for free blowing fan).

Voltage [V]	Air Volume $\dot{V}_L$ [m <sup>3</sup> /h] @ $\rho = 1,2 \text{ kg/m}^3$ and Current [A] (bold figures, 2nd. line)							
	Free Air	Total Pressure $\Delta p_t$ [Pa]						
		200	300	350	400	450	500	550
80	950 <b>2,40</b>	50 <b>2,32</b>						
100	1309 <b>3,07</b>	849 <b>2,98</b>	359 <b>2,78</b>					
125	1934 <b>3,90</b>	1572 <b>3,72</b>	1332 <b>3,61</b>	1089 <b>3,49</b>	879 <b>3,36</b>			
150	2503 <b>2,60</b>	2323 <b>4,52</b>	2145 <b>4,39</b>	2037 <b>4,30</b>	1703 <b>4,07</b>	1105 <b>3,81</b>		
170	2910 <b>5,12</b>	2890 <b>5,10</b>	2688 <b>4,95</b>	2588 <b>4,87</b>	2372 <b>4,72</b>	2091 <b>4,55</b>		
190	3366 <b>5,59</b>		3184 <b>5,43</b>	2996 <b>5,31</b>	2840 <b>5,20</b>	2574 <b>5,02</b>	2030 <b>4,75</b>	
230	4028 <b>6,22</b>			4028 <b>6,22</b>	3673 <b>5,99</b>	3358 <b>5,80</b>	2993 <b>5,58</b>	2520 <b>5,34</b>

Save power and even more silent with  
**FISCHBACH SPEED CONTROLLERS**  
**FISCHBACH AUTOMATIC CONTROLLERS**

Voltage Control	Type*	Order-No.*
Stepless, 0 - 100% and 100% - 0	FDR 80	<b>6164</b>
Stepwise, 7 Steps	FDR 750	<b>6202</b>
FISCHBACH AUTOMATIC CONTROL**	FRA 80	<b>6253</b>

\* For further details see resp. catalogue pages  
 \*\* For details of sensors etc., on request



\* External dimension of discharge



The Silent One

In the above diagram the **TOTAL** pressure (the sum of the dynamic and static pressures) is shown in relation to the air volume, dynamic pressure is shown below system line No.1. Static pressure is shown above that line.