

Type: DS = Double Inlet

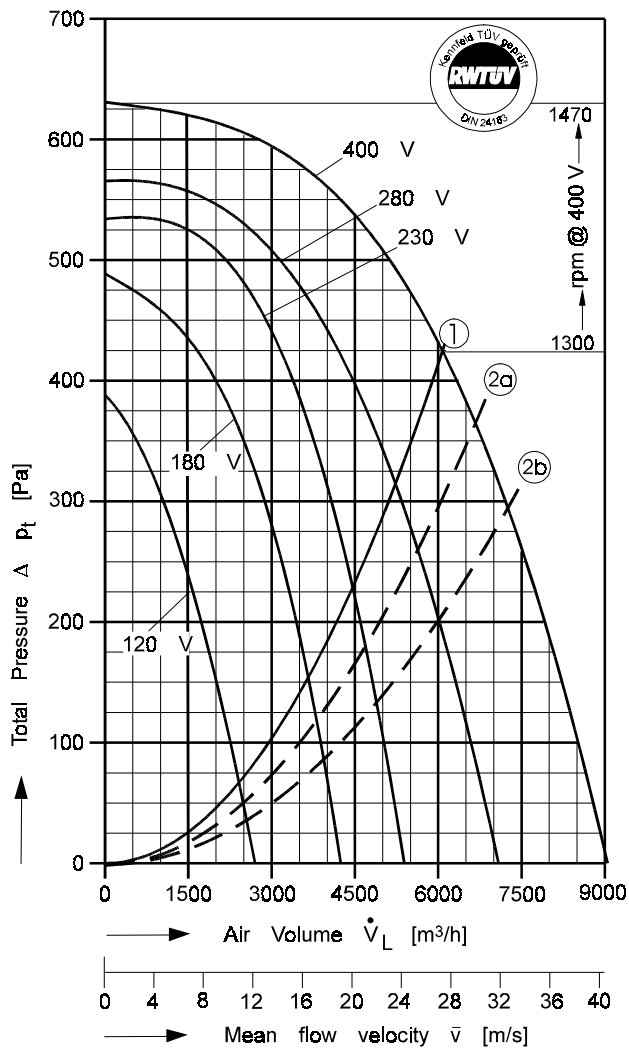
Performance / Dimensions



Type: DS 6-770/D 1 [400V 3N~ 50 Hz]

Protection type: IP 65

For sound data please see extra pages.

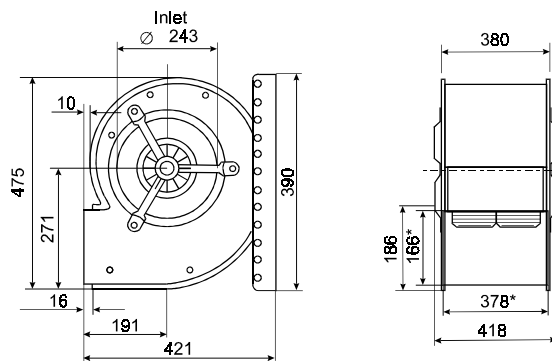


Voltage [V]	Air Volume \dot{V}_L [m³/h] @ $\rho = 1,2 \text{ kg/m}^3$ and Current [A] (bold figures, 2nd. line)							
	Free Air	Total Pressure Δp_t [Pa]						
		150	250	300	400	450	500	550
120	2410 3,18	2010 2,54	1420 1,94	1050 1,74				
180	3650 3,97		3180 3,40	2880 3,07	2000 2,21	1200 1,58		
230	4430 4,14		4350 4,07	4080 3,83	3390 3,27	2900 2,91	2180 2,46	
280	5235 4,40				4470 3,59	3900 3,12	3150 2,66	1850 2,19
400	5980 4,80					5790 4,72	5130 4,46	4240 4,16

Save power and even more silent with
FISCHBACH SPEED CONTROLLERS
FISCHBACH AUTOMATIC CONTROLLERS

Voltage Control	Type*	Order-No.*
Stepless, 0 - 100% and 100% - 0	FDR 55/3	6231
Stepwise, 5 Steps	FDR 5.5/3	6182
FISCHBACH AUTOMATIC CONTROL**	FRA 55/3	6281
Frequency Inverter FFU	on request	

* For further details see resp. catalogue pages
 ** For details of sensors etc., on request



* External dimension of discharge

① System curve for dynamical pressure part related to fan discharge surface of 0,0619 m². For operating points above that curve a max. air temperature of 60° C ist allowed (Curve for free blowing fan).

②a System curve incl. pressure regain by means of TRANSITION PIECE (square to round, FISCHBACH accessory) with connected duct. Duct length: 0,8 m.

②b System curve incl. pressure regain by means of DIFFUSER ANGLE FRAME (FISCHBACH accessory) with connected duct. Duct length: 2,8 m.



The Silent One

In the above diagram the **TOTAL** pressure (the sum of the dynamic and static pressures) is shown in relation to the air volume, dynamic pressure is shown below system line No.1. Static pressure is shown above that line.

To regain static pressure and reduce dynamic pressure connect a suitable transition piece on the fan outlet.