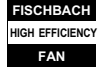


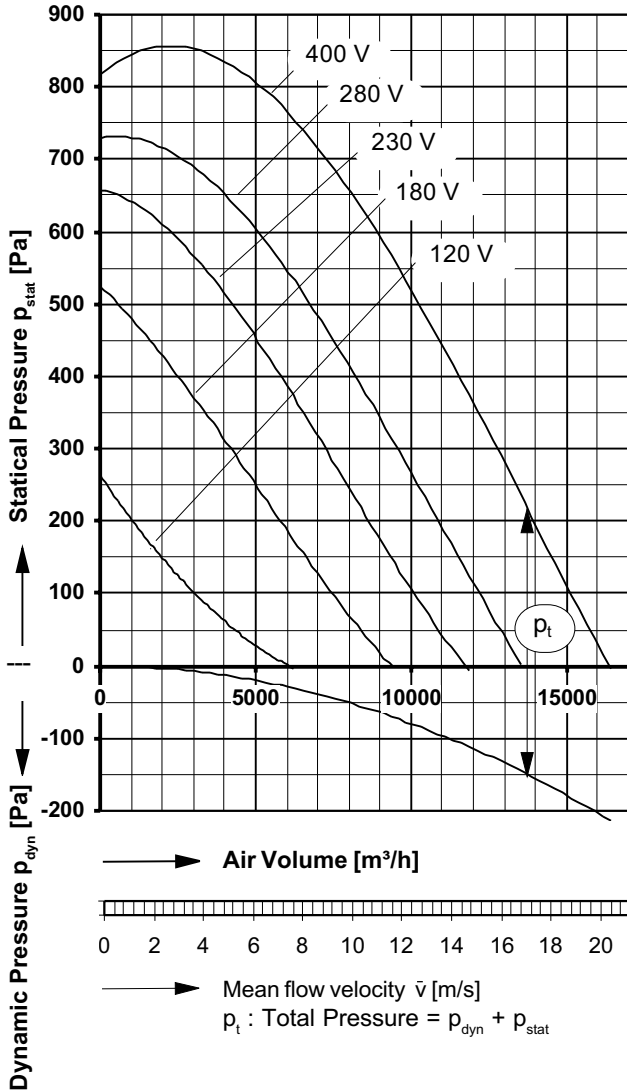
Type: HD = double inlet

Performance / Dimensions



Type: HD 500/D 2.5 [400V 3 N~ 50 Hz]
Protection type: IP 65

For sound data please see extra pages.



P_{max}	= 4,00 kW	rpm_{max}	= 1410 min ⁻¹
I_{max}	= 8,80 A	I_A/I_N	= 2,10

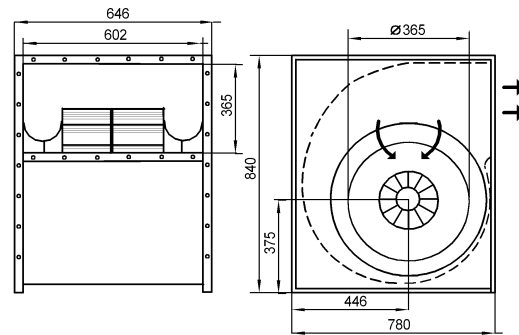
Max. permissible Air Inlet Temperature: 65°C

Voltage [V]	Air Volume \dot{V}_L [m ³ /h] at $\rho = 1,2 \text{ kg/m}^3$ and current [A] (figures bold, 2nd. line)							
	Free air	Statical Pressure [Pa]						
		200	300	400	500	600	700	800
120	6050 4,77	1000 4,25						
180	9360 6,46	5780 6,04	4180 5,66	2560 5,17	570 4,39			
230	11700 7,29	8630 6,87	7230 6,57	5830 6,20	4250 5,70	2270 4,95		
280	13530 7,73	10870 7,37	9560 7,13	8190 6,84	6760 6,47	5080 5,98	2600 5,12	
400	16320 8,71	13920 8,44	12750 8,27	11540 8,08	10270 7,85	8890 7,58	7290 7,22	5180 6,70

Save power and even more silent
FISCHBACH SPEED CONTROLLERS
FISCHBACH AUTOMATIC CONTROLLERS

Voltage Control	Type	Order No.
Stepless, 0 - 100% and 100% - 0	FDR 120/3	6233
Stepwise, 5 steps	FDR 11.3/3	6175
FISCHBACH AUTOMATIC CONTROL	FRA 120/3	6283
Frequency Inverter	on request	

Controller FDR and FRA with casing is standard with motor protection relay and outlet fuses



The Silent One