



THE INNOVATIVE SOLUTIONS FOR PROFESSIONAL APPLICATIONS

FISCHBACH

The heart of Ventilation technology

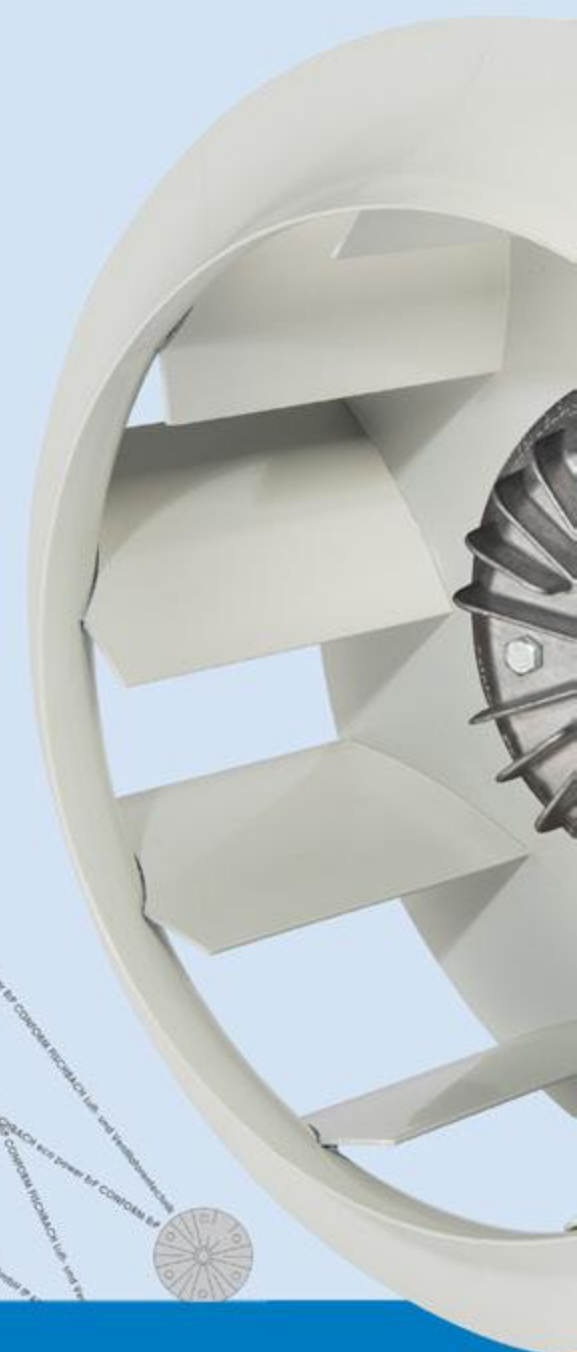
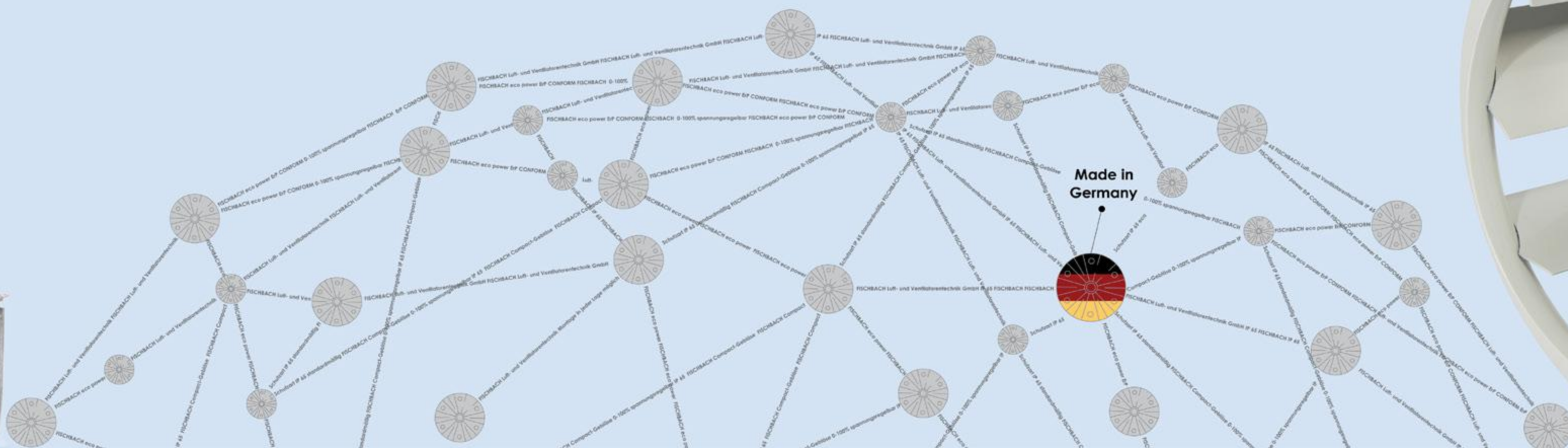
For 50 years, we produce the proven and appreciably high-quality FISCHBACH products with the 100% speed adjustable disc rotor motor.

We have taken the new challenges of the market to improve and expand this successful product line.

Our production of all parts from the motor over the fan up to the control and complete units enable us an independence from suppliers and an individual problem solving for our customers.

The proximity to our customers and a qualitatively high-class production is our maxim. The continuous flow of information and a good co-operation between you and our employees have top priority for FISCHBACH to make collectively product- and quality improvements.

Jens Schäfer
Managing Director



FISCHBACH disc rotor motor.
The innovative solution for professional applications.

FISCHBACH
Luft- und Ventilatorentechnik GmbH

FISCHBACH
Luft- und Ventilatorentechnik GmbH
Am Hellerberg 22 - 24
D-57290 Neunkirchen / Germany
Tel. ++49 (0) 2735 / 777-0
Fax ++49 (0) 2735 / 770-625
www.fischbach-luft.de
info@fischbach-luft.de

FISCHBACH
Luft- und Ventilatorentechnik GmbH





The core of our products is the world's well-known disc rotor motor. Standard: IP 65, insulation class F, speed controllable by voltage, integrated thermal contact, three times lower starting current compared with the standard motors, very compact construction (e.g.: 10 kW Ø 300 x L 200)

Fans can be made by individual order: with special wheel impeller, service side, performance for outdoor installation, operation for adverse climate conditions, quantity of poles of the motor, speed, electric power, etc. The Fischbach motor can be equipped customer's impeller, passed all necessary tests and balancing in our factory.



EC-MOTOR

The development of the proven Fischbach EC-Disc-Rotor-Motor is available. The special and superior design is a development of Fischbach Luft- und Ventilatorentechnik GmbH



The main protection functions:

- Motor temperature monitoring (shutdown at over temperature)
- Current monitoring of the motor (off overcurrent)
- Voltage monitoring (shutdown with overvoltage / under voltage)
- Voltage drop, or fast on / off switch in succession (loose contact)
- Temperature monitoring of the controller

Regulation modes:

- driven by the so-called Slip
- constant speed
- volume flow constant
- control certain operating points

Run around heat recovery AHU

Run around heat recovery is a two or more coil system.

- The heat from the exhaust air is used to heat the glycol fluid in the system to provide heating to the supply air coils. The coils are selected and balanced based on the thermal loads.
- multi-stage air purification technology
- active carbon filter
- hydraulic control box

The Fischbach -EC-controller

without sensors, auto-adaptive, highly efficient and adapts to every fan curve and can even after the time-tested Slip of Fischbach-disc rotor motor work, as well as speed and volume constant. Customer-specific applications can be implemented easily and quickly. The Fischbach-EC Controller is equipped with many motor protection functions that ensure a 100% fan operation.

AHU for the ventilation and air conditioning:

Through the development and introduction of innovative technologies, heat recovery and regeneration systems, EC motors produced we able to offer equipment that will satisfy customers' desire and needs for ventilation market. Following functions: circulating, filtration, heating, cooling, heat recovery, humidifying, dehumidifying and mixing of air.

Flexible and High efficiency energy recovery systems



AHU with counterflow plate heat exchanger MINI 400/600/800

- 365 mm high, air flow 400/600/800 m³/h
- PVC extruded profile and 41mm insulation panels
- efficiency of heat exchanger up to 90%
- integrated electrical heater or optional water/DX heating/cooling
- AC or EC Fischbach motor
- motorizes by-pass damper available
- anti-freeze protection of the heat exchanger
- Low noise level, vibration free
- standard modules are always in stock



Ultra-quiet FLAT units for ceiling installation

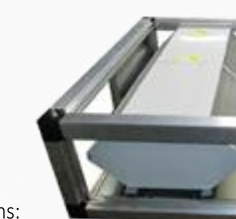
Using superflat Fischbach fans allows us to produce compact AHU 350 mm high and air flow up to 9000 m³/h

- saving space for equipment
- mounting the unit directly to the ventilation area, reducing air flow and labour costs
- wide range of CFE fans enables make quick and easy selection to get required air flow/pressure
- easy access for maintenance
- standard modules are always in stock



Crossflow plate heat exchanger, series: APK and APD

- FLAT type: APK-F and APD(V)-F
- NORM type: APK-N and APD(V)-N
- VT type: APK-V
- bypass version available
- energy-savings of up to 60%
- devoid of cold bridges
- specially designed for all sizes of the FLAT and NORM AHU and Fischbach fans: VT, FMB, FMBT, FMBF, etc



Counterflow plate heat exchanger, series: GSH and GSV

- FLAT type: GSH-F and GSV-F
- NORM type: GSH-N and GSV-N
- VT type: GS-VT
- bypass version available
- energy-savings of up to 90%
- devoid of cold bridges
- specially designed for all sizes of the FLAT and NORM AHU and Fischbach fans: VT, FMB, FMBT, FMBF, etc



Transformer speed controllers FDR series

- stepwise - 5 and 7 steps
- stepless - 0-100%
- in casing and without
- with integrated contactor
- with on/off keys and fuses



Frequency inverters FFU

- standart and new models with IP66!!!
- built in PID controller, with specific HVAC functions
- MODBUS interface
- V/Hz and sensorless control
- PC-Software



Electronic speed controller FRE series

- 6A and 12A
- Electronic Potentiometer HF10
- 0-10V

Radial double inlet fans, series: D, DS and EC-motor series:

- with forward curved impeller
- max. V = 24.000 m³/h
- max. p = 1.500 Pa
- with high slip characteristics
- single or twin motor
- extremely quiet running
- application: air handling units (AHU), exhaust systems, dry technology and refrigeration, curtains and fan heaters, kitchen ventilation, process equipment etc.



Axial Fans, series: AW/Q EC-motor series:

- AW - plastic impeller
- Q - square frame
- max. V = 18.000 m³/h
- max. p = 200 Pa
- installation size 315-630 mm impeller diameter
- application: ventilation and exhaust of buildings, halls, heaters, dry technology, refrigeration, agriculture



Axial Fans, series: AW/R und EC-motor series:

- AW - plastic impeller
- R - round wall frame
- max. V = 18.000 m³/h
- max. p = 200 Pa
- very low depth
- installation size 315-630 mm impeller diameter
- application: ventilation and exhaust of buildings, halls, heaters, dry technology, refrigeration, agriculture



Axial Fans, series: D, AW/D und EC-motor series:

- AW - plastic impeller
- D - double flange pipe
- max. V = 18.000 m³/h
- max. p = 200 Pa
- very low depth
- installation size 315-630 mm impeller diameter
- application: ventilation and exhaust of buildings, halls, heaters, dry technology, refrigeration, agriculture



Radial single inlet fans, series: CE EC-motor series:

- with forward curved impeller
- max. V = 7.000 m³/h;
- max. p = 1.100 Pa
- with high slip characteristics
- extremely quiet running
- application: air handling units (AHU), exhaust systems, dry technology and refrigeration, curtains and fan heaters, kitchen ventilation, technological equipment etc.



Radial single inlet fans, superflat series: CFE and EC-motor series:

- with forward curved impeller
- max. V = 6.000 m³/h; max. p = 1.100 Pa
- with high slip characteristics
- extremely quiet running
- appl.: air handling units (AHU), exhaust systems, dry technology and refrigeration, curtains and fan heaters, kitchen ventilation, technological equipment etc.



Radial single inlet fans, series: CEK

- forward curved impeller
- max. V = 4.000 m³/h; max. p = 600 Pa
- max. permissible air flow T - up to 80°C
- max. ambient T - up to 40°C
- extremely quiet running
- with external disc rotor motor
- application: kitchen exhaust



Radial single inlet fans, series: HEK

- with backward curved impeller
- max. V = 8.000 m³/h; max. p = 650 Pa
- max. permissible air flow T - up to 80°C
- max. ambient T - up to 40°C
- extremely quiet running
- with external disc rotor motor
- application: kitchen exhaust



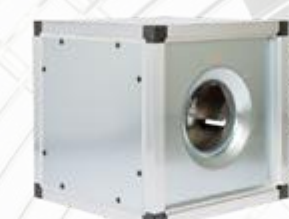
Heavy-duty double inlet fans, series: HD

- with backward curved impeller
- max. V = 40.000 m³/h;
- max. p = 1.700 Pa
- with high slip characteristics
- narrow pressure air volume characteristics
- extremely quiet running
- application: air conditioning and cleanroom technology, canteen



Multi Box, series: FMB, EC-motor series: FMB-EC

- with freewheeling impeller and backward curved blades
- max. V = 15.500 m³/h
- max. p = 950 Pa
- universally applicable
- aluminium profile frame construction and double shelled
- application: industry sector, building equipment



Freewheeling impeller, FLRE und EC-motor series:

- with backwards curved impeller
- max. V = 15.500 m³/h
- max. p = 950 Pa
- easy mounting and maintaining
- high economy
- application: air handling units (AHU), exhaust systems, dry technology and refrigeration, curtains and fan heaters, kitchen ventilation, process equipment etc.



Multi Box, flat series: FMBF und EC-motor series:

- with freewheeling impeller and backward curved blades
- max. V = 15.500 m³/h
- max. p = 950 Pa
- universally applicable
- aluminium profile frame construction and double shelled
- application: Industry sector, building equipment



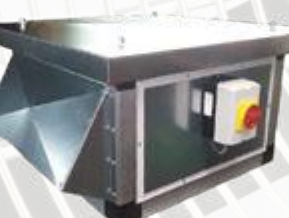
Thermal Exhaust unit, FMBT und EC-motor series:

- with free wheeling impeller and backwards curved blades
- max. V = 15.000 m³/h
- max. p = 1100 P
- with external IEC standard or EC-motor
- universally applicable
- aluminium profile frame construction and double shelled 40mm
- application: kitchen exhaust



Roof Top Units, flat series: 40-F Type and EC-motor series: 40-F-EC Type

- with free wheeling impeller and backward curved blades
- max. V = 15.500 m³/h
- max. p = 950 Pa
- aluminium profile frame construction and double shelled 40mm
- application: central exhaust of residential buildings, business premises, office and industry buildings



Roof Top Units, superflat series: 40-EC Type

- with forward curved impeller
- max. V = 3.800 m³/h
- max. p = 600 Pa
- installation size 1 to 3
- application: central exhaust of residential buildings, business premises, office and industry buildings



Roof Top Units, standard series: 41 Type and EC-motor series: 41-EC Type

- with forward curved impeller
- max. V = 30.000 m³/h
- max. p = 1.400 Pa
- installation size 1 to 4
- with weather shelter and outlet dome
- application: Central exhaust of residential buildings, business premises, office and industry buildings



Multi Box, series: VN EC-motors series: VN-EC

- double inlet compact fans
- max. V = 33.000 m³/h
- max. p = 1.500 Pa
- 40 mm double shelled housing insulation with aluminium frame
- application: Building equipment, supply and exhaust air - compact AHU

