

FISCHBACH - SPEED CONTROLLER

Type FDR, stepless

FISCHBACH

Luft- und Ventilatorentechnik GmbH

single-phase 1x230V / 50Hz It is highly recommended to run the motors with at least 150V!

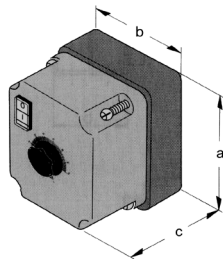
with casing for wall mounting provided with ON/OFF-switch, pilot light, rotary knob and scale disc, contactor and fuses

without casing, supplied with rotary knob and scale disc loose for installation in a switch-cabinet

type	[A]	Kg	part no.	dimensions			ill.	type	[A]	Kg	part no.	dimensions					
				[mm]								[mm]					
				a	b	c						∅ a	∅ b	∅ c	d	f	∅ g
FDR 32	3,2	5,5	6162	195	150	150	1	FDR 32	3,2	4	6681	103	26	3xM4	98	30	133
FDR 55	5,5	7,4	6163	255	200	170	1	FDR 55	5,5	4	6682	125	95	3xM6	130	30	155
FDR 80	8	8,6	6164	255	500	170	1	FDR 80	8	6	6685	152	95	3xM6	105	45	182
FDR 120	12	14	6165	315	235	190	1	FDR 120	12	10	6684	172	95	3xM6	120	30	204
FDR 200	20	27	6167	322	322	330	2	FDR 200	20	16	6686	240	176	4xM6	120	25	300

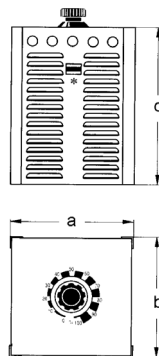
protected to IP 54

ill. 1

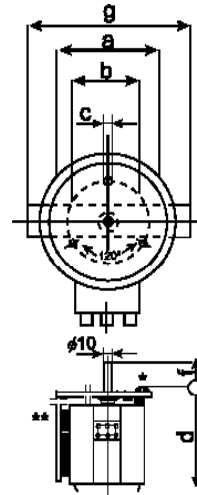


protected to IP 21

ill. 2



free standing installation
ON/OFF-switch side view



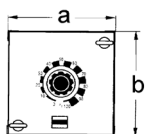
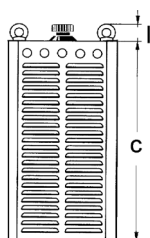
three-phase 3x400V / 50 Hz It is highly recommended to run the motors with at least 230V!

3-phase version designed for free standing installation with casing, with ON/OFF-switch, pilot light, rotary knob and scale disc, contactor and fuses/relays

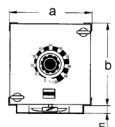
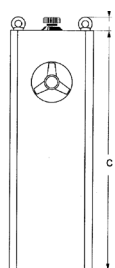
type	[A]	Kg	part no.	dimensions					ill.
				[mm]					
				a	b	c	l	E	
FDR 55/3	5,5	27,5	6231	229	229	645	36	-	1
FDR 80/3	8	32,6	6232	229	229	645	36	-	1
FDR 120/3	12	41,2	6233	229	229	645	36	-	1
FDR 200/3*	20	on request							
FDR 400/3**	2x20	on request							

protected to IP 21

ill. 1



ill. 2



* ON/OFF-switch side view
** with fan